

Due to the technical limitations of digital cameras and inconsistencies of display monitors, the characteristics and colors of the fabrics seen on your screen may be slightly different than the actual product.

Black
T92DFS001

Strong, breathable, vibrant and durable. Twitchell’s TEXTILENE® brand of sport fabirc is designed to withstand tough outdoor use. The densely woven selvedge enales this fabric to be heat-sealed, while high UV performance provides lasting color in any athletic setting.

Specifications

REACH Compliant - Regulated by Registration, Evaluation, Authorization and Restriction of Chemicals. REACH places greater responsibility on industry to manage the risks that chemicals may pose to human health and the environment.

Children’s Toy Act - Does not contain harmful phthalates listed under Section 108 of the Consumer Product Safety Improvement Act of 2008 (CPSIA).

Environmental Certification - GREENGUARD gold certified. Acceptable for use in environments such as schools and healthcare facilities. Complies with requirements of the State of California’s Department of Public Health “Standard Method for Testing and Evaluation of Volatile Organic Chemical Emissions from Indoor Sources Using Environmental Chambers, Version 1.1 (2010)” (also known as California Section 01350).

RoHS Compliant - Free of Lead (Pb), Cadmium (Cd), Mercury (Hg), Hexavalent chromium (Hex-Cr), Polybrominated biphenyls (PBB), and Polybrominated diphenyl ethers (PBDE).

Bacteria and Fungal Resistance - Passes ASTM E 2180, ASTM G21. Includes specially formulated antimicrobial.



REACH COMPLIANCE



LEAD FREE



GREENGUARD GOLD



RoHS COMPLIANT



PRINTABLE



LIMITED WARRANTY



MADE IN USA

Technical Data

Item Number: T92DFS

Product Description: A fabric using .025" diameter vinyl coated 1000 denier polyester core yarn woven in the warp and fill.

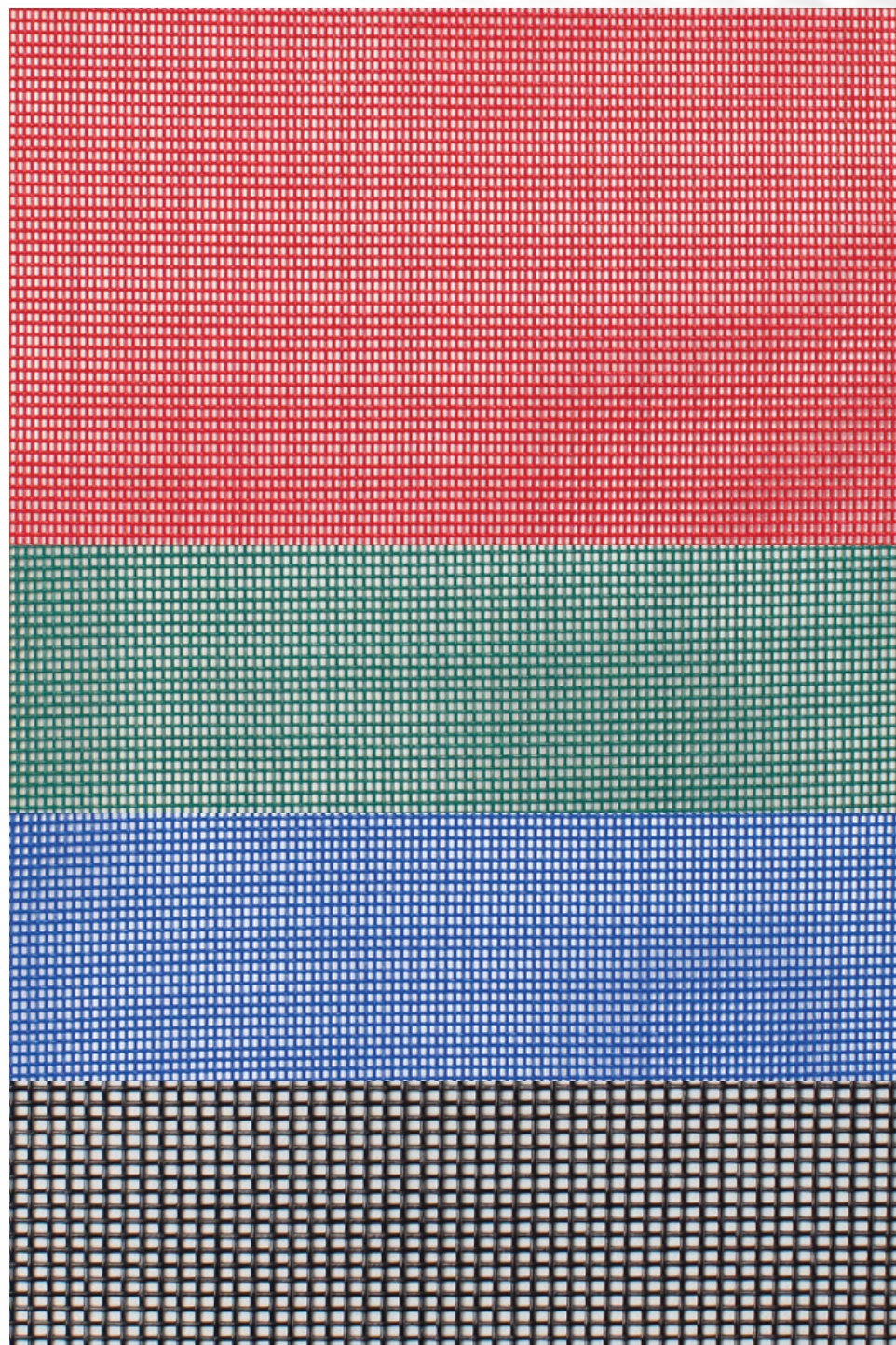
Attribute	ASTM	Warp	Fill	Typical
Construction, end/inch	D3775-12	12.5 ± 0.5	10.0 ± 0.5	
Weight, oz/yd ²	D3776-09			9.1
Tensile Strength (grab), lbf	D5034-09	506.8	368.3	
Tensile Strength (strip), lbf	D5035-11	205.4	156.3	
Tear Strength (trapezoidal), lbf	D5733	87.9	55.5	
Elongation, %	D5035-11	13.3	11.2	
Abrasion Resistance (CS10/500 cycles/ with no added weight)	D3884-09	No Exposure of Core Yarn		
Flammability Rating		CA TB 117-2013		
Weatherability, 1200 hours	G154	Trace Discoloration		
Mildew Resistance	G21-13	No Growth		
Thickness, inches	D1777-96			0.0306
The above results are a representation of real data from single test samples in our laboratory. Independant test results may vary. Presently no specification is incorporated.				

SUGGESTED USES

- Exercise Mats
- Play Gym Floor Mats
- Netting
- Gym Bags
- Play Gym Sidewalls
- Youth Cots
- Golf Bags
- Gymnasium Dividers
- Jump Pit Fabrics

DISTRIBUTED OR MANUFACTURED BY:

***Custom colors and widths available. Minimum order of 1000 yds. Upcharges may apply. ** Available in 50 lyd rolls.**

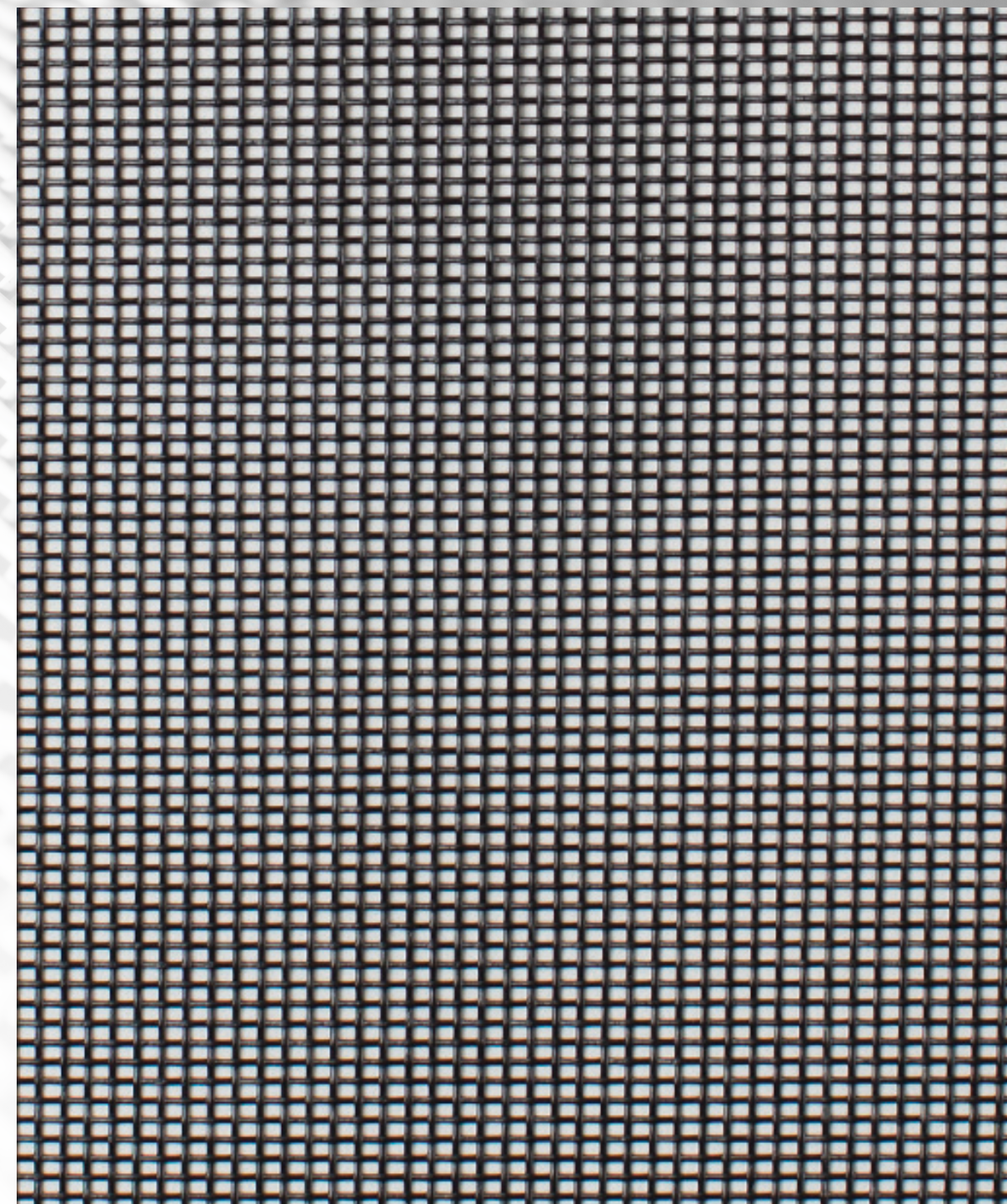


Lollipop Red
T92DFS003 x 72"

St. Augustine
T92DFS002 x 72"

Royal Blue
T92DFS004 x 72"

Black
T92DFS001 x 72"



Black
T92DFS001

Due to the technical limitations of digital cameras and inconsistencies of display monitors, the characteristics and colors of the fabrics seen on your screen may be slightly different than the actual product.

72" = 182.88 cm